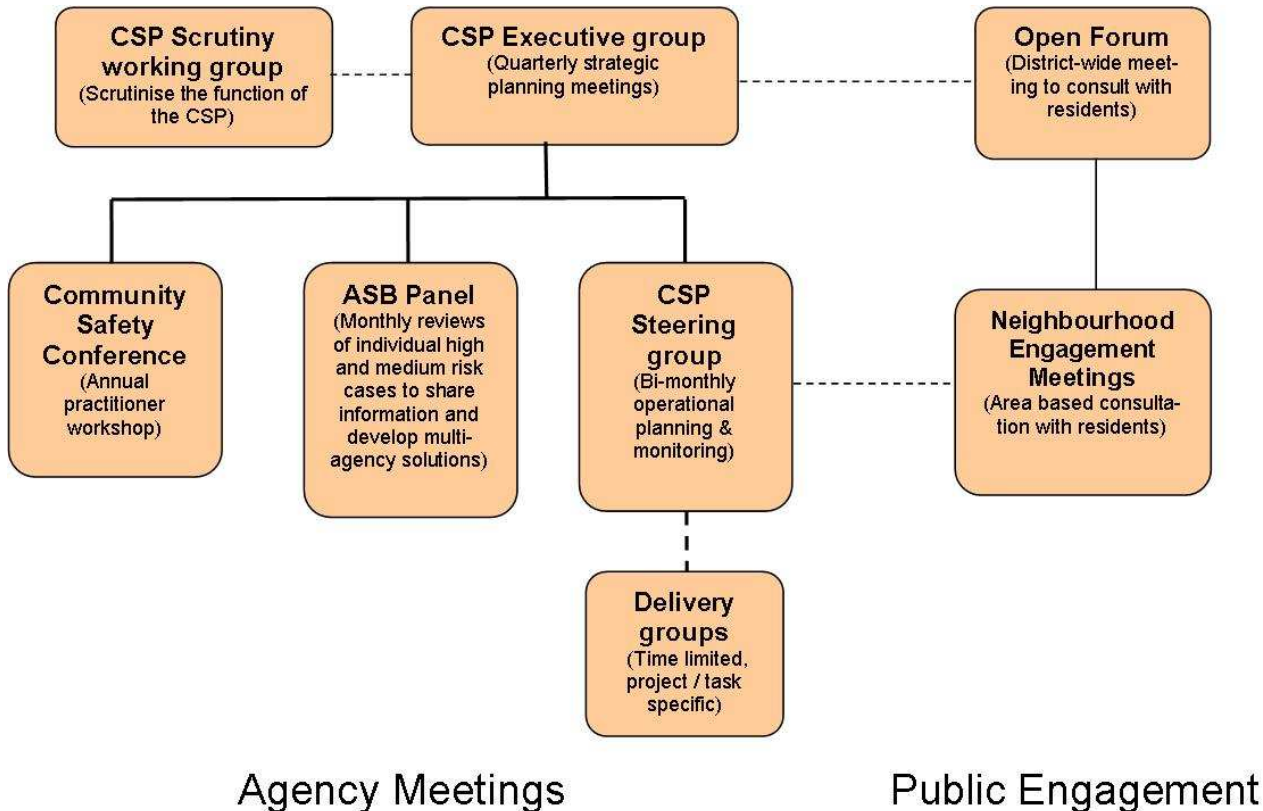


Community Safety Partnership Engagement 2013

Agencies of the partnership meet throughout the year via a number of different forums aimed at co-ordinating activity, monitoring trends and ensuring clear information sharing. The partnership also oversees a comprehensive system of consultation with residents through its public engagement structure.



Agency Meetings

Community Safety Partnership Executive Group

Is made up of senior managers from the statutory agencies who act as a board overseeing the decisions and direction of the partnership. They are responsible for agreeing and ensuring practitioners implement the Community Safety Plan.

Community Safety Partnership Scrutiny Working group

This group is co-ordinated by the District Council political members and provides a scrutiny function, ensuring all processes have been complied with and that partners are working together. The group also oversees strategic planning and makes recommendation on the decision of the partnership.

Community Safety Conference

This is an annual practitioner meeting where the strategic assessment priorities are reviewed and verified by wider partners, best practice is shared and ideas generated to inform and draft the annual community safety plan.

Community Safety Partnership Steering group

Meets bi-monthly and ensures the practical delivery of the community safety plan, associated projects and encourages inter-agency working on community safety initiatives.

Should further groups need to meet more regularly to ensure the specific delivery of a project or initiative within the Community Safety Plan, or as a response to a sudden emerging trend then this work could be managed by the initiation of a **delivery group**.

Multi-Agency ASB Case Panel

Is an operational panel that meets monthly and is attended by front line practitioners to review and discuss high and medium risk ASB cases that require multi agency provision. This is to ensure joined up working, prevent duplication and ensure information is shared reducing the chance of cases being ignored.

Public Meetings

Open Forum

Open Forum events occur twice a year and are an opportunity for residents to meet with senior managers, look at the strategic planning, discuss priority issues and find out about the progress of the partnership against its action plan. It is not an opportunity to make area specific observations. It is also an opportunity for residents to get involved in partnership projects and find out more about Community Safety.

Neighbourhood Engagement Meetings (NEM)

The partnership also delivers Neighbourhood Engagement Meetings to identify the issues that matter most to residents in our local communities. The district is divided into North, East, South and West geographical areas - with those living in more rural areas attending whichever location is closest and most relevant to them. A quarterly meeting takes place for each area. This improved agency efficiency by replacing the previous structure of 21 Partners and Communities Together (PACT) meetings.

The NEM meeting is attended by police inspectors and PCSOs for that area and district council representatives. Members of the community are free to pose questions or make observations about their area, even down to street level. Meeting dates are advertised on the Kent Police and District Council Websites in advance and are an opportunity to collectively problem-solve community safety issues.

